

* 44 SET OF JOINTS

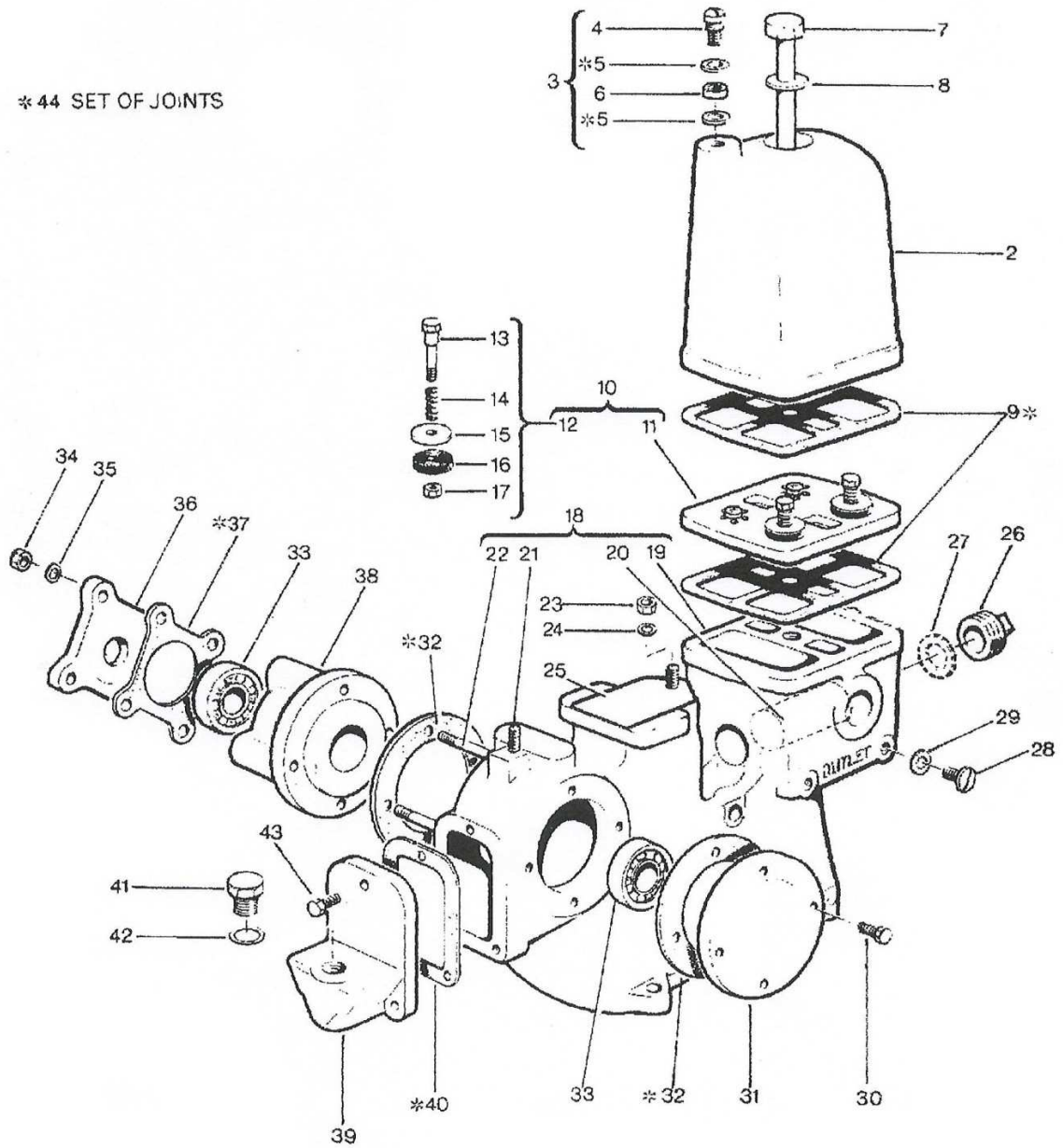


Fig.8 Pump Body & Air Chamber

2	187.00012	Air Chamber	135.64
3	187.00366	Air Screw Assembly	15.65
4	187.00055	Air screw	12.38
7	187.00021	Air Chamber fixing screw	19.34
8	187-00023	Fixing screw washer	3.79
9	187.00347	Valve Seating Joint - Neoprene	6.53
10	187.00362	Valve Plate + 4 x 187-00361 fitted	220.83
11	187-00013	Valve seating plate - Brass	172.46
12	187.00361SEP	Valve Assembly	16.66
13	187.00024	Valve set pin	7.80
14	187.00027SEP	Valve Spring	1.25
15	187.00025SEP	Valve carrier - Brass	3.52
16	187.00348SEP	Valve Disc - Neoprene	1.67
17	187.00060SEP	Valve Lock Nut - Brass	1.25
18	187.00365	Pump Body + 20x1, 21x2, 22x4	POA
19	187.00001	Pump Body	640.07
20	187.00046	Plunger barrel liner	21.65
21	027.00220	Stud 3/8" x 1/2"	2.21
22	187.00368	Stud 5/16" x 3-3/16" BSW	5.27
25	187.00141	Cover Plate	4.71
26	027.04520SEP	1-1/4"BSP Flange Plug	10.00
27	028.00265	Joint Fibre	1.37
28	034.00072SEP	Drain Plug 1/8"BSP - Brass	3.12
29	034.00070	Drain Plug Joint Fibre	0.31
31	187.00003	Bearing Housing	42.74
32	187.00004	Bearing Housing Joint	2.45
33	021.00150	Bearing RLS 6)LJ-3/4")	29.23
36	187.00005	Bearing End Plate	15.00
37	187.00036	Joint - Bearing Housing	2.14
38	187.00002	Bearing Housing	44.82
39	187.00100	End cover-oil Filler Castle Nut 3/8" BSF	23.76
40	187.00077	Joint - End Cover	2.09
41	027.01815	Oil Filler Plug 3/8" BSP	10.06
42	027.01814	Joint - Oil Filler Plug	2.05
44	187.00143SEP	Joints - Complete Set	14.99

All prices on this list are plus delivery and VAT

If the items you require are not readily available on the website to add to your basket please send us an email with a list of your requirements quoting the part number and description from the above list.